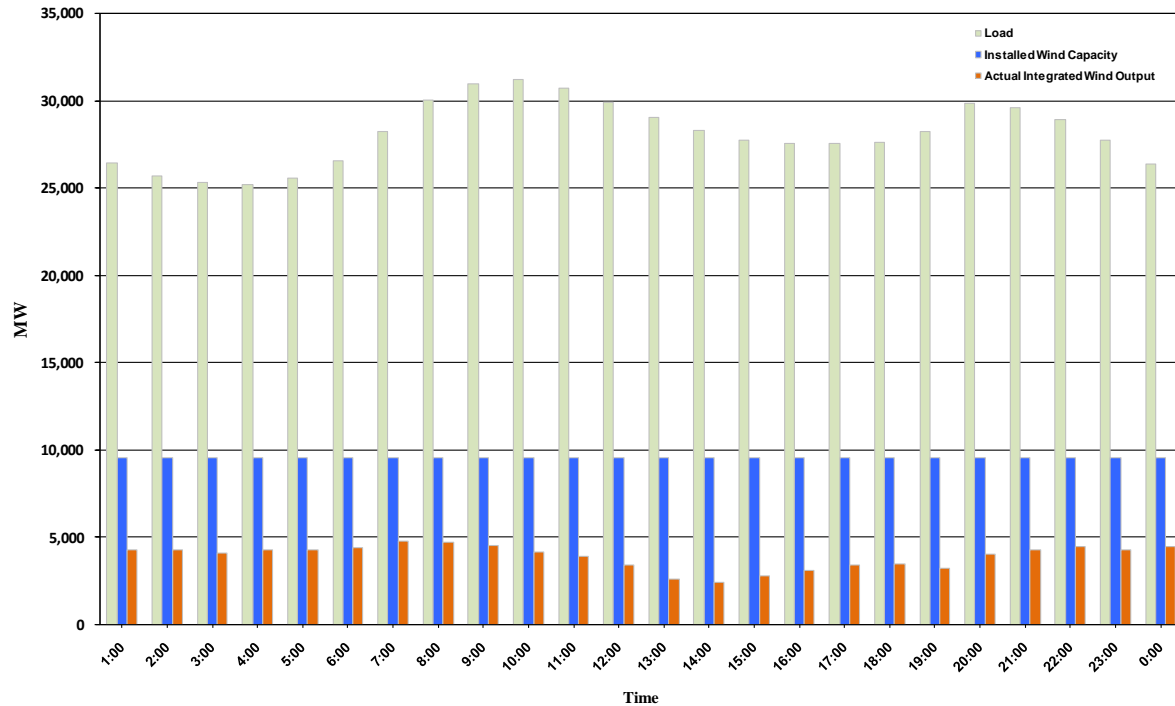




## ERCOT Grid Operations Wind Integration Report: 11/06/10

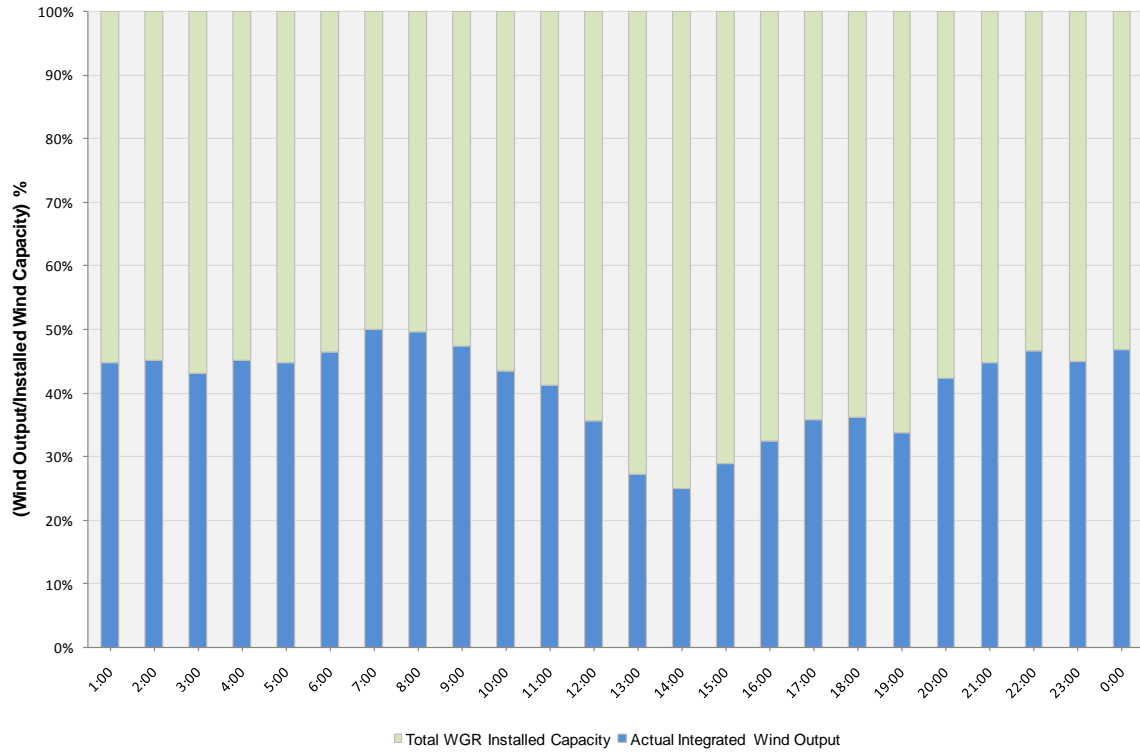
Peak Load	<b>31,206 MW</b>
Load Peak Hour	<b>10</b>
Wind Record 06/12/10	<b>7016 MW</b>
Max Wind value	<b>5005 MW</b>
Wind Peak Hour	<b>07:02:08</b>
Wind Integration %	<b>17.09</b>

Hourly Average Actual Load vs. Actual Wind Output  
11-06-2010



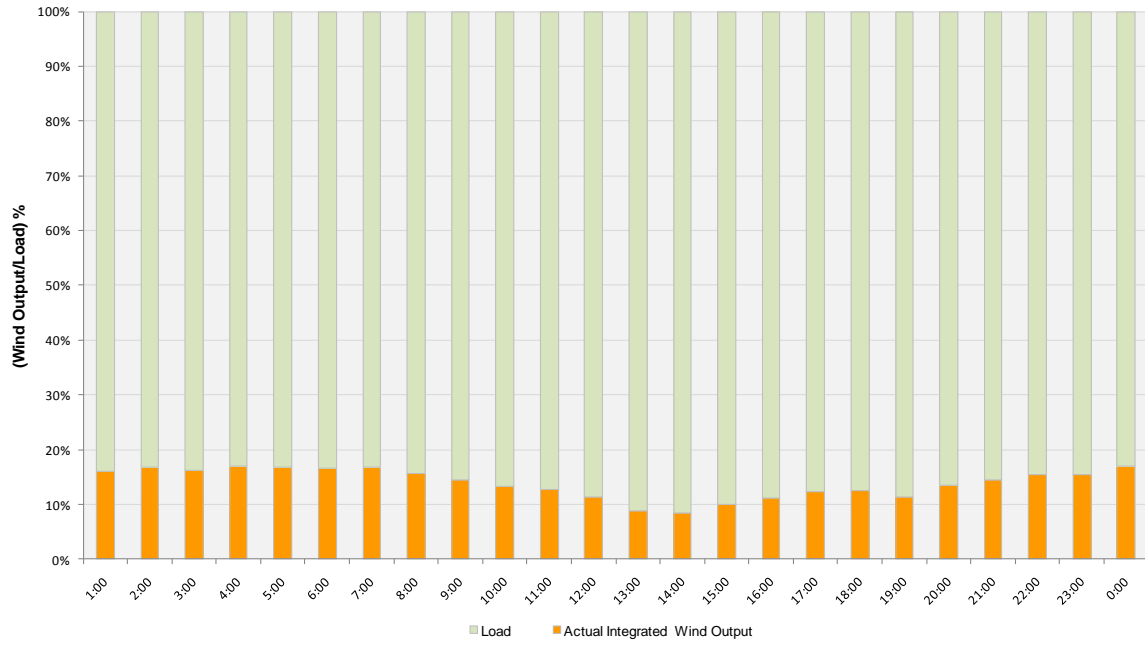


**Actual Wind Output as a Percentage of the Total Installed Wind Capacity**  
**11-06-2010**





**Actual Wind Output as a Percentage of the ERCOT Load**  
**11-06-2010**





ERCOT Load vs. Actual Wind Output 10/30/10 - 11/06/10

